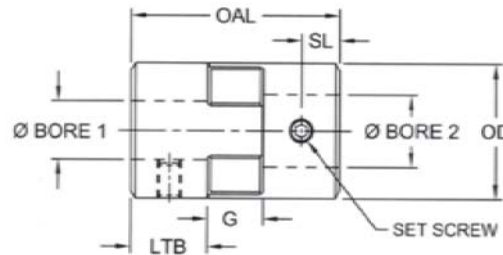


- **L-Type Couplings**
- **High-Quality Spider Design**
- **Handles the Most Demanding Applications**
- **Sintered Iron Hubs**
- **Allows for Different Bore Diameters**
- **No Backlash**
- **No Maintenance**
- **Wide Variety of Sizes**



The CPL-L Series is a high-quality spider designed coupling line. These jaw type couplings allow for different core diameters. A three-piece configuration (selected individually) is required to accomplish this task. The CPL-L Series never requires maintenance. With a one inch outside diameter, these couplings are offered in a variety of major and minor bore diameters.



Model #	Bore A1 (in)	Bore A2 (in)	Outside Diameter (in)	Torque (in-lb)	OAL (in)	LTB (in)	SL (in)	Screw Size	Screw Torque (in-lb)	Torsional Flexibility (deg/in-lb)	Inertia (lb-in-sec ²)	Weight (g)
CPL-L050-250-410206	0.25	N/A	1.063	26.3	1.71	0.62	0.31	1/4-20	78	N/A	0.00139864	63.5
CPL-L505-375-410208	0.375	N/A	1.063	26.3	1.71	0.62	0.31	1/4-20	78	N/A	0.00139864	54.4
CPL-L050-500-410210	0.5	N/A	1.063	26.3	1.71	0.62	0.31	1/4-20	78	N/A	0.00139864	54.4
CPL-L050-625-410214	0.625	N/A	1.063	26.3	1.71	0.62	0.31	1/4-20	78	N/A	0.00139864	45.4
CPL-L050-5mm-446214	0.197	N/A	1.063	26.3	1.71	0.62	0.31	1/4-20	78	N/A	0.00139864	63.5
CPL-L050-6mm-450351	0.236	N/A	1.063	26.3	1.71	0.62	0.31	1/4-20	78	N/A	0.00139864	554.4
CPL-L050-7mm-410215	0.276	N/A	1.063	26.3	1.71	0.62	0.31	1/4-20	78	N/A	0.00139864	63.5
CPL-L050-8mm-441460	0.315	N/A	1.063	26.3	1.71	0.62	0.31	1/4-20	78	N/A	0.00139864	54.4
CPL-L050-SPDR-55-65-DURO	N/A	N/A	1.063	26.3	1.71	N/A	N/A	N/A	N/A	N/A	0.00139864	N/A

L010557